



RÉSIDENCE
HERMIONE

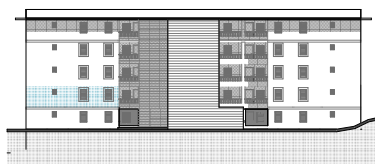
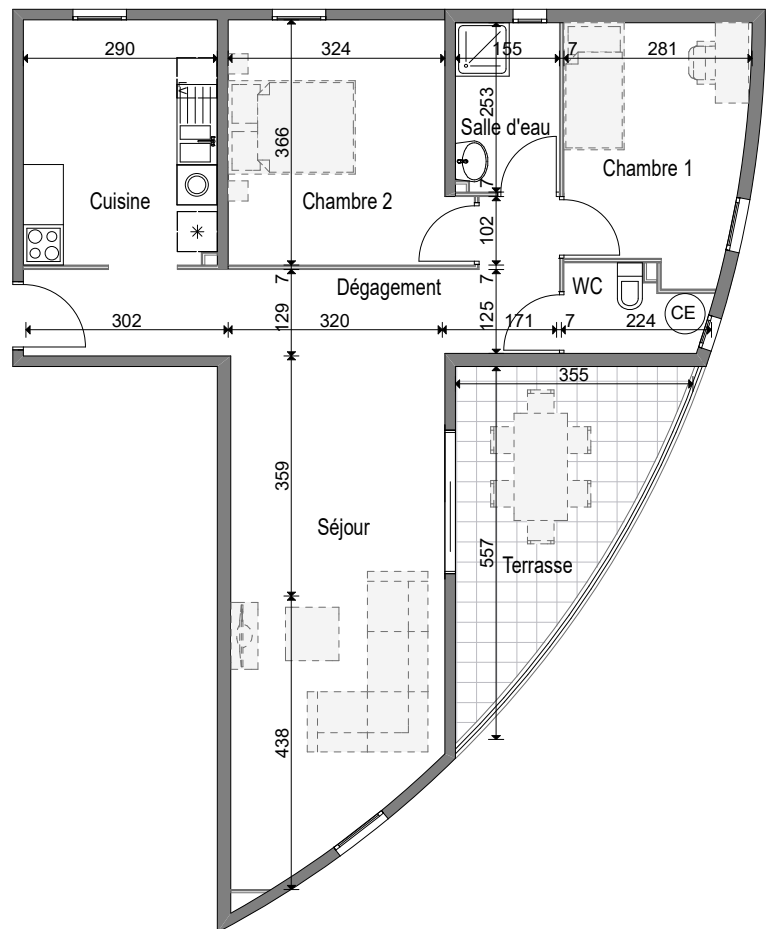
APPARTEMENT T3

Bâtiment A - Niveau 1 - Appartement LOT A06
Parkings Lots 68 (ss) et 139 (ss)

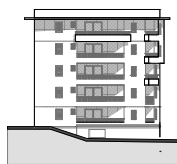
TABLEAU de surfaces

Chambre 1	9.77 m ²
Chambre 2	12.03 m ²
Cuisine	10.21 m ²
Dégagement	10.82 m ²
Salle d'eau	3.79 m ²
Séjour	23.09 m ²
WC	2.36 m ²
<hr/>	
SURFACE HABITABLE	72.07 m ²
<hr/>	
Terrasse	11.66 m ²
<hr/>	
SURFACE TOTALE	83.73 m ²

Architecte : DANIEL DONAT
Maître d'ouvrage: SCCV BETANNI



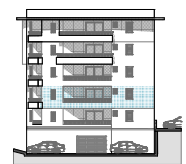
Façade Nord-Ouest



Façade Sud-Ouest



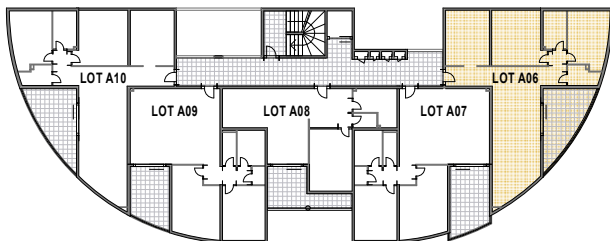
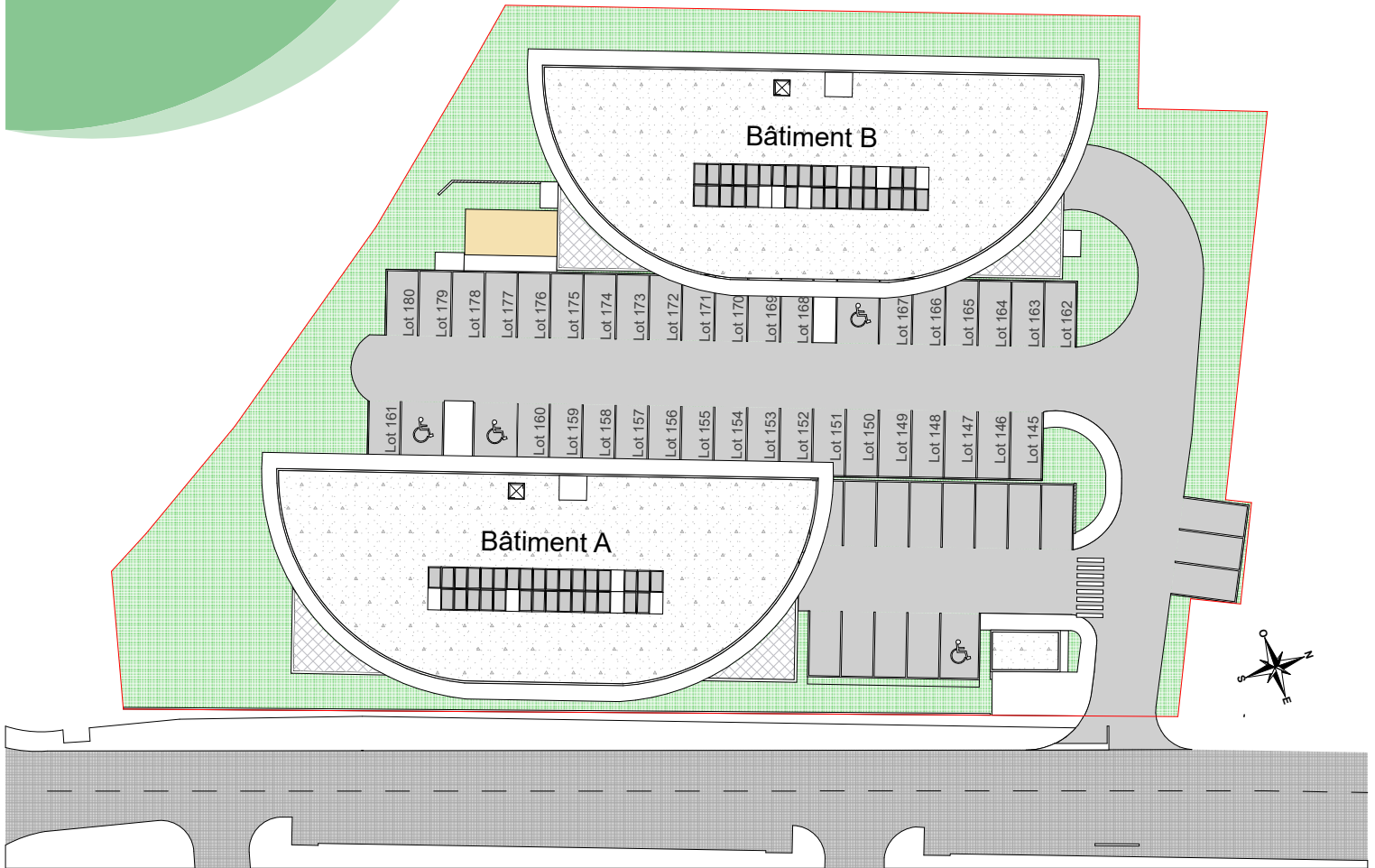
Façade Sud-Est



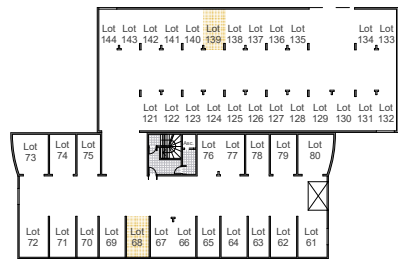
Façade Nord-Est



RÉSIDENCE
HERMIONE



Plan du niveau 1



Plan du niveau -1